



INTEGRATED GEOTECHNICAL SOLUTIONS



**SPECIAL FOUNDATION DRILLING
CONTRACTOR**

**“THE TREE WITH DEEP ROOTS IS NOT AFRAID
OF THE STORM”**



13 years of intelligent building

Merging the forces of a very well trained personnel and state of the art drilling equipment, in 2007 we gave birth to our company in order to raise the standards of the local special foundations market.



By supplying high quality services and complying all deadlines, INGES ENGINEERING has completed many projects in this period in both private and public sector, covering all types of special foundation works.

We are proud to use the latest drilling technology, complying the most severe quality and pollution standards from job sites all over the world.

Incorporating **technical solutions** suitable to all ground engineering requests, **designing and optimizing projects ability**, we are able to propose you full package of geotechnical and special foundations solutions.

We invite you to our sites around the territory, in order to evaluate our capacity!

Main geotechnical works that can be tackled:

- **BUILDINGS FOUNDATION** – Piles & Diaphragm walls
- **BRIDGES & VIADUCTS** – Piling works up to $\Phi 1.500\text{mm}$
- **SUPPORTING WALLS** – Piling works up to $\Phi 1.500\text{mm}$
- **SOIL CONSOLIDATION** – Full displacement Piles, Stone columns, Soil micropiles, Jet-Grouting
- **ANCHORS**

Our drilling equipment can cover the following types of construction works:

Large diameter piles:

- **Bentonite system** $\Phi 450\text{-}1500\text{mm}$ up to 40m
- **Casing system** $\Phi 600\text{-}1500\text{mm}$ up to 30m
- **CFA** $\Phi 350\text{-}1200\text{mm}$ up to 27m
- **Displacement piles** $\Phi 400\text{-}600\text{mm}$ up to 20m
- **Drill in narrow spaces** such as inside elevator shafts, inside buildings, and under low roof and low headroom conditions $\Phi 400\text{-}600\text{mm}$ up to 15m

Diaphragm walls: 400-800mm x 2000/2500 up to 31m

Microdrilling & Consolidation:

- Micropiles $\Phi 100\text{-}300\text{mm}$
- Anchorings
- Jet-Grouting

CFA

FDP

Jet Grouting

Kelly drilling

Cased Kelly drilling

DESIGN&BUILD

In Design&Build services, the Builder provides professional services for the realization of the project and assumes the professional and civil responsibility both for its design and for its construction.

Like any complex project, a successful special foundation project requires a fine balance between time, quality and cost, which can be best achieved through collaboration between designer and builder.

Either you need a new special foundation design or you have already a solution but it does not fit to the budget or is not corresponding to site conditions, INGES team provides both Design and Optimization services, so to simplify and accelerate the project delivery process, while offering an innovative and cost-effective solution. We are always concentrated to find the best match and balance between short time execution period, the lowest cost and the higher standard of quality and performance, having particular approach to each client, depending on his aspirations and expectations. We offer efficiency in terms of time and budget.

We provide an unique opportunity to maximize your savings and simplify the construction process.

High technology and multifunctionality

Our equipment can meet all site needs

- **MULTIFUNCTIONALITY**
- **EASY TRANSPORT**
- **SHORT ASSEMBLING TIME**
- **SITE VERSATILITY**
- **SAFETY**
- **ENVIROMENTAL PROTECTION**

INGES ENGINEERING

has been awarded environmental, quality and management certificates:

- **ISO 9001**
- **ISO 14001**
- **ISO 45001**



Successfully realised projects matter



RESIDENTIAL BUILDING ALEZZI INFINITY, MAMAIA NAVODARI - 2020

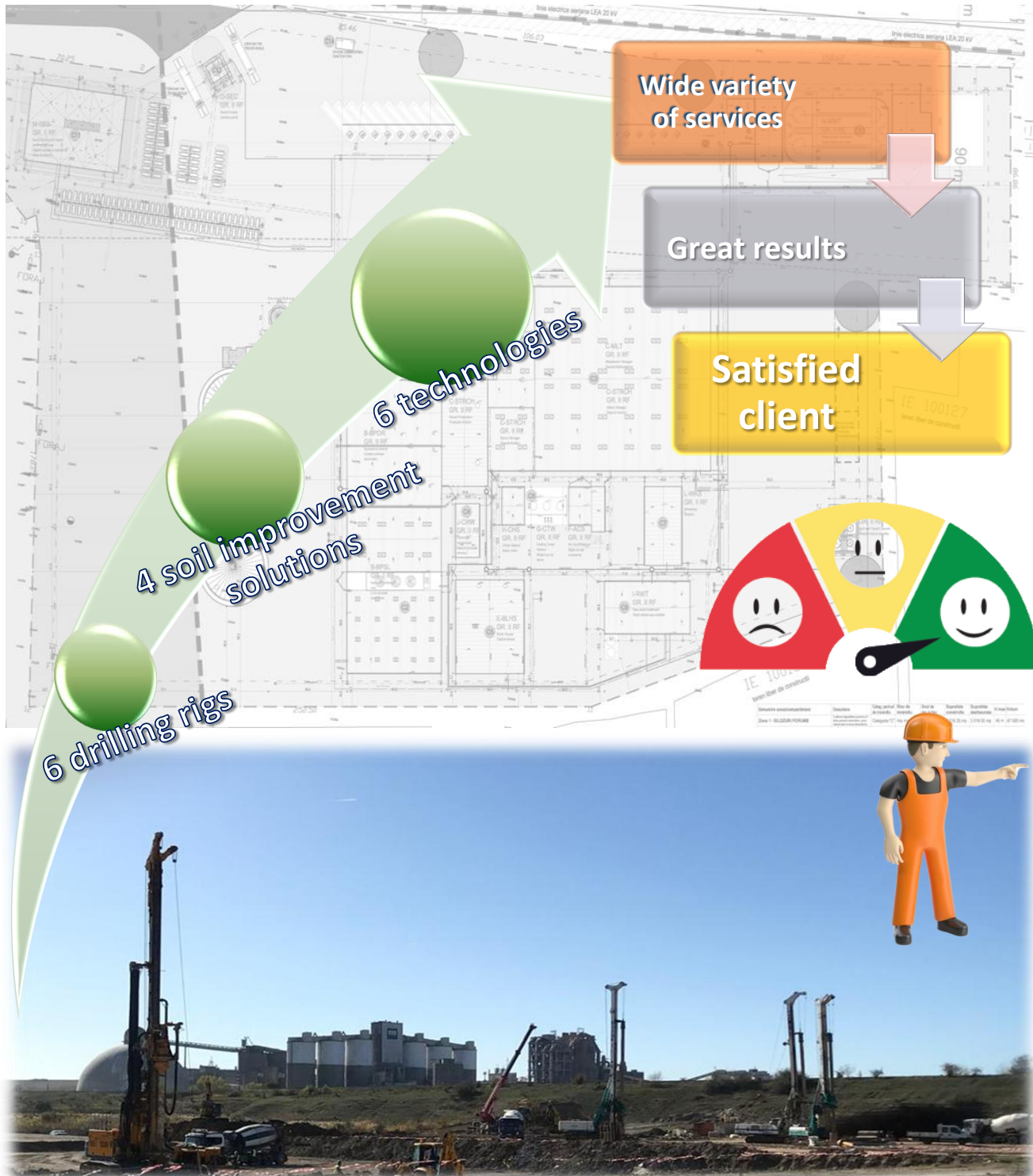


BRIDGE PROTECTION WORKS ON DAMBOVITA RIVER - 2020



CFA piles $\Phi 630\text{mm}$, $L=20,00\text{m}$

OMNIA EUROPE SA – CORN STARCH FACTORY, MEDGIDIA 2019-2020 DESIGN&BUILD



OMNIA EUROPE SA – CORN STARCH FACTORY

Soil improvement
with FDP piles

Secant cased
piles Φ 600mm

Foundation FDP piles
with reinforcement

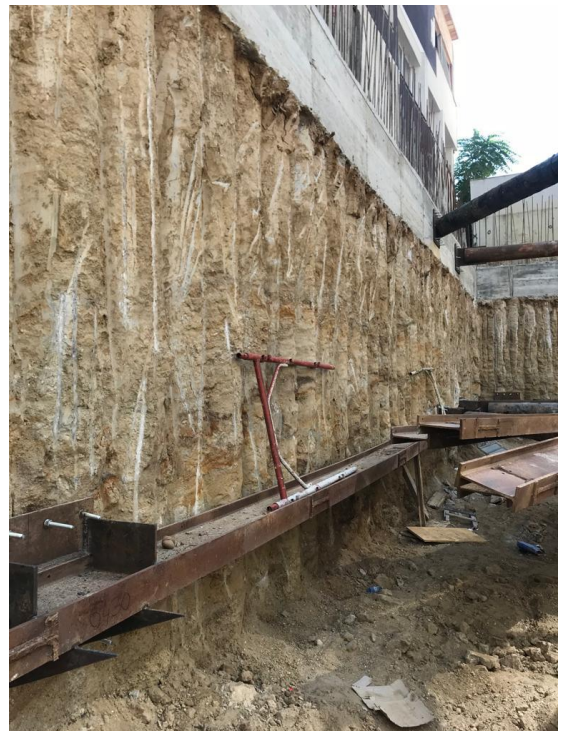
Heavy Foundation piles Φ 800mm
Bentonite system

RESIDENTIAL BUILDING , PITESTI 2019

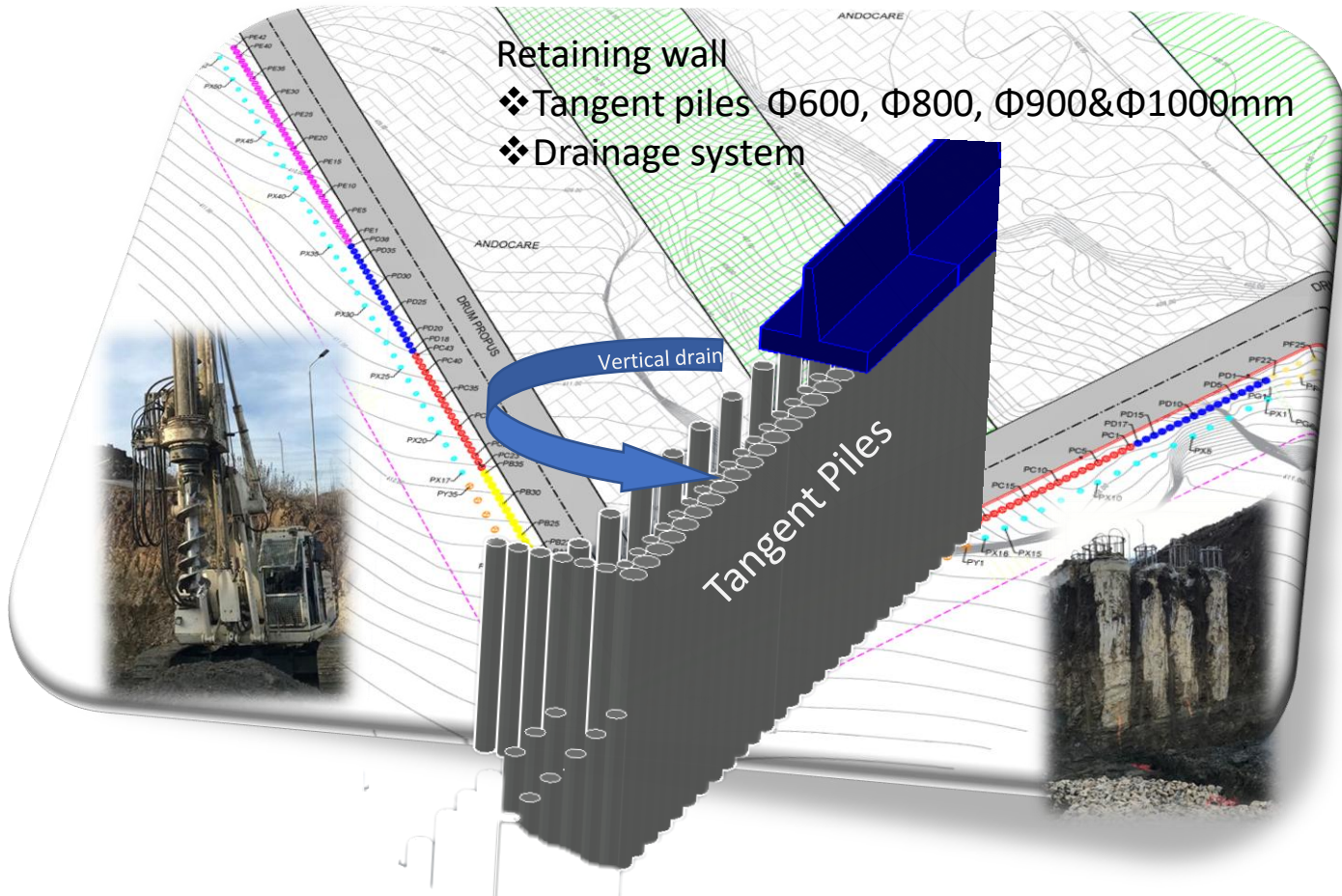
We offer the best solution for drill in narrow spaces with limited headroom



**Tangent piles retaining wall
 $\Phi 400\text{mm}/\Phi 500\text{mm}/\Phi 600\text{mm}$**



INDUSTRIAL PARK , SELIMBAR, SIBIU 2019 DESIGN&BUILD

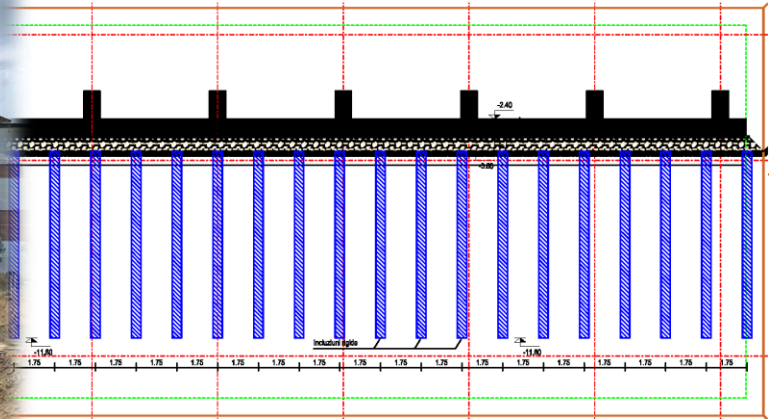


FLOREASCA RESIDENCE 2S+P+5E+6R, BUCHAREST 2018



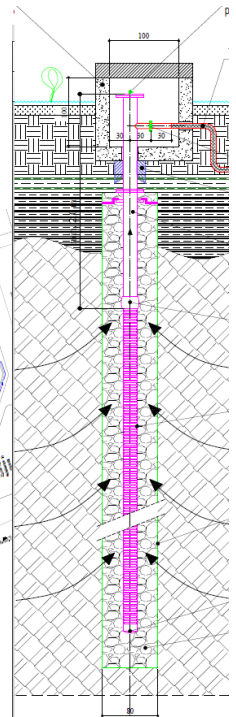
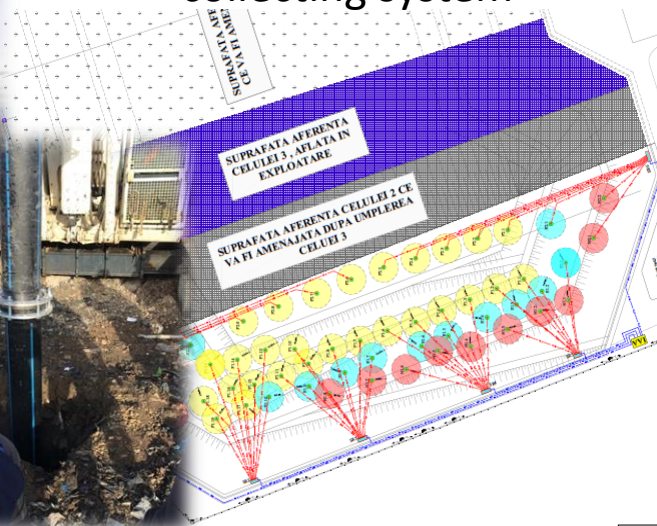
UNIREA RESIDENCE , BACAU 2018

Design & Build :
Soil improvement with
displacement piles $\Phi 500$ mm



DRILLING GAS WELLS -CLOSING THE CELLS 1 AND 2 IN THE ECOLOGICAL LANDFILL, BRASOV 2018

$\Phi 800$ mm drilling &
installation of the biogas
collecting system



YILDIZ ENTEGRE ROMANIA MDF FACTORY, PITESTI 2017-2018

Foundation bored piles:

$\Phi 800\text{mm}$ & $\Phi 900\text{mm}$ depth 34m bentonite protection system

$\Phi 600\text{mm}$ depth 19m depth, CFA drilling system



SEBES-TURDA LOT 3 HIGHWAY , AIUD 2015

Heavy foundation piles $\Phi 1200\text{mm}$ depth 31,00m casing system



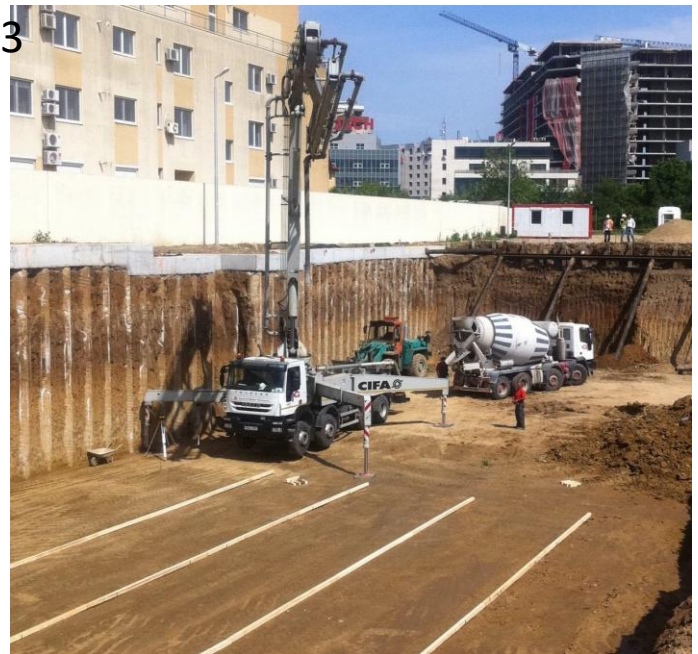
Heavy foundation piles $\Phi 1000$ & $\Phi 1200\text{mm}$ depth 27,00m
bentonite system



GAFENCU 49 RESIDENCE 2S+P+10E+11E, BUCHAREST 2014



Tangent piles $\Phi 620\text{mm}$ 12,35m depth
 Berlinese wall 12,35m depth
 Cap beam
 General excavation $\sim 27.000\text{m}^3$
 Leveling screed $\sim 5.000\text{sqm}$



Anchors $\Phi 250\text{mm}$ length 9,00m
 Microdrilling $\Phi 250\text{mm}$ for HEA200
 length 12,35m

POD MURES 2 BRIDGE – INFRASTRUCTURE - 2013

Secant piles screen $\Phi 1080\text{mm}$ @ 15,00m depth



Severe drilling conditions were encountered

A3 SIBIU-DEVA HIGHWAY – ACILIU VIADUCT - 2012



Bored piles
 $\Phi 1200\text{mm}$
37,00m
depth



MARIA ROSETTI 38 – RESIDENTIAL BUCHAREST- 2012



Secant piles screen near existing building $\Phi 600\text{mm}$ 13,40m depth
Tangent piles screen $\Phi 600\text{mm}$ 13,40m depth



Bored piles $\Phi 800\text{mm}$ @ 17,00m depth



Drilling mud has been used for stabilizing the water up-pressure inside the casing protection



SUCEAVA UNDERGROUND PARKING - 2011



Secant piles $\Phi 600\text{mm}$

Diaphragm wall screen – hydraulic grab 600mm 14,00m depth

BUCHAREST RING ROAD DN1A-DN7 CHITILA - 2010

Large diameter piles $\Phi 1.500\text{mm}$ 25,00m depth bentonite system



Some other big projects:

2020

- ❖ Road DJ 204C modernization, Buzau County – $\Phi 1080\text{mm}$ piles wall
- ❖ Fodder factory, Ialomita County – $\Phi 600\text{mm}$ foundation piles
- ❖ Road rehabilitation DJ134, Mures County - $\Phi 1080\text{mm}$ piles wall
- ❖ Closing the cell 1 in the ecological landfill, Bacau – $\Phi 800\text{mm}$ drills
- ❖ Bridge over Neajlov River, Dambovită County – $\Phi 1080\text{mm}$ foundation piles
- ❖ Road consolidation DN13, Brasov County – $\Phi 880\text{mm}$ piles wall

2019

- ❖ Bridge over Carcinov River, Topoloveni - $\Phi 1080\text{mm}$ foundation piles
- ❖ Medical University building, Bucharest – $\Phi 600\text{mm}$ foundation piles
- ❖ Residential building , Bacau – $\Phi 600\text{mm}$ foundation piles
- ❖ Road DN7 modernization, Dedulesti - $\Phi 1080\text{mm}$ piles wall
- ❖ Residential building Virtutii, Bucharest – $\Phi 880\text{mm}$ foundation piles

2018

- ❖ Residential building Gran Via, Bucharest – $\Phi 400\text{mm}$ piles & berline wall
- ❖ Road rehabilitation DC4c , Prahova County – $\Phi 600\text{mm}$ piles wall
- ❖ Road DJ172d modernization, Bistrita-Nasaud County – $\Phi 880\text{mm}$ piles wall
- ❖ Hydrotechnical works on Otasau River, Valcea County – $\Phi 1080\text{mm}$ foundation piles
- ❖ Iron Waste Processing Factory, Turnu-Magurele – $\Phi 600\text{mm}$ foundation piles
- ❖ Road landslide rehabilitation, Tepu, Galati County - $\Phi 600\text{mm}$ piles wall
- ❖ Washing machine Factory ARCTIC SA , Ulmi - $\Phi 880\text{mm}$ foundation piles

2017-2007

- ❖ Works for initializing oil well OMV Petrom, Totea - $\Phi 880\text{mm}$ foundation piles
- ❖ Road rehabilitation DJ703, Arges County – Micropiles wall
- ❖ International Cultural Center Brancusi, Craiova – 400mm Diaphragm wall
- ❖ NATO BASE - US Army Corps Facilities, Deveselu – $\Phi 600\text{mm}$ foundation piles
- ❖ Residential building METROCITY, Bucharest – $\Phi 600\text{mm}$ piles wall
- ❖ Wind turbine Somova, Tulcea County - $\Phi 1000\text{mm}$ foundation piles
- ❖ Orastie-Sibiu Highway - $\Phi 1200\text{mm}$ foundation piles
- ❖ People's salvation Cathedral, Bucharest – $\Phi 800\text{mm}$ foundation piles
- ❖ "Otelul Galati" Stadium – Galati – $\Phi 620\text{mm}$ foundation piles



INGES ENGINEERING

Pipera-Tunari 47, Voluntari,
Ilfov, Romania



+4 0752 905 883



office@inges.ro